

# TIBCO Jaspersoft ETL

## Data Integration for BI

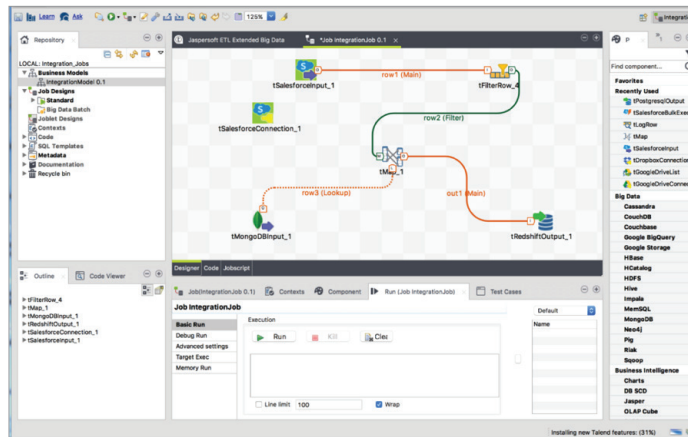
### INTEGRATE, TRANSFORM, AND CLEANSE DATA BETWEEN SYSTEMS

TIBCO Jaspersoft® ETL powered by Talend is an open source data integration and data quality solution that easily integrates, cleanses, and profiles your data. It scales from one to many developers and can handle the highest levels of data volumes and process complexity. Simple graphical tools and wizards allow you to get up and running quickly with native code generation and continuous delivery capabilities that streamline development.

When used with the Jaspersoft Business Intelligence suite, Jaspersoft ETL enables organizations to develop, manage, and document data integration processes for improved reporting and analysis.

### DEVELOP 10 TIMES FASTER AND DO MORE WITH YOUR DATA

Jaspersoft ETL Design Studio features more than 900 connectors to natively connect relational databases, flat files, cloud-based applications, big data and NoSQL data sources, and more. Graphical drag-and-drop tools and wizards speed design, test creation, and generate code in the languages you need. Easily manage and monitor projects ranging from simple, one-time ETL tasks to complex, ongoing data synchronization steps requiring thousands of jobs. Teams use a shared repository and versioning tools for maximum production.



### IMPROVE DATA ACCURACY AND INCREASE TRUST

Jaspersoft ETL offers a complete solution to provide, cleanse, anonymize, and mask data, while monitoring data quality over time regardless of format or size. Through data de-duplication, validation, standardization, and enrichment you create clean high-quality data for access, reporting, and analysis.

### EASILY DEPLOY AND MANAGE ALL INTEGRATION JOBS

With Jaspersoft ETL, you'll save time developing integration jobs—but the support does not end there. Integrations can be very complex and challenging to keep running smoothly. Talend Administration Center allows developers to publish their integration jobs to a centralized portal that makes it easy to schedule, manage, and chain together jobs, as well as provide API-based triggers and much more. Data integration developers can easily hand off their projects to operations teams that can look after day-to-day tasks that often arise in running complex jobs.

**COMPARE**

Choose a data integration solution to best fit your project and budget.

FEATURES	JASPERSOFT ETL COMMUNITY	JASPERSOFT ETL - EXPRESS	JASPERSOFT ETL	JASPERSOFT ETL - EXTENDED BIG DATA
<b>License</b>	Apache® v2	Subscription	Subscription	Subscription
<b>Big Data</b>			Apache Hadoop® and NoSQL Components	+Batch (Apache Spark®, MapReduce), native Hadoop connectors
<b>Design Faster and Scale Easily</b>	900+ components and connectors		+Talend Administration Center to move jobs from development to production	+Load balancing, high availability, and failover
<b>Support</b>	Community forums and wiki	+Professional support (standard or premium)	+Professional support (standard or premium)	+Professional support (standard or premium)
<b>Indemnification / Warranty</b>		✓	✓	✓
	Free download	Request info	Request info	Request info

**SPECIFICATIONS**

At time of publication, Jaspersoft ETL provides support for those third-party components, products, and operating systems listed at right. For full, up-to-date product documentation, visit [help.talend.com](http://help.talend.com)

**SUPPORTED OPERATING SYSTEMS**

- CentOS Linux
- OS X
- Redhat Enterprise Linux
- Solaris
- SUSE Linux
- Ubuntu Linux
- Microsoft Windows
- IBM AIX

**SUPPORTED SAAS AND THIRD-PARTY APPLICATIONS**

Access over 900 pre-packaged integration connectors, components, and templates, including:

- SaaS Connectors: Marketo, Salesforce and Salesforce Wave, NetSuite, MS CRM and AX
- Packaged Application Connectors: SAP (table extract, BAPI, IDOC), Sugar CRM, Microsoft, Sage X3, CentricCRM, Vtiger CRM, Open Bravo
- Technical Connectors: Amazon S3, Box, Alfresco, Dropbox, ElasticSearch, GoogleDrive, Email (SMTP), FTP/SFTP, REST, Splunk

**DATABASE AND STORAGE CONNECTIVITY**

Amazon RDS, Redshift and S3, Apache HBase®, AS400, DB2, Derby DB, Exasol, eXistdb, Firebird, Google Storage, Greenplum, H2, Apache Hive®, HSQLDB, Informix, Ingres, InterBase, JavaDB, JDBC, MariaDB, MaxDB, Microsoft OLE-DB, Microsoft SQL Server, MySQL, Netezza, Oracle, ParAccel, PostgreSQL, PostgresPlus, SAS, SQLite, Sybase, SybaseIQ, Teradata, VectorWise, Vertica, Windows Azure Blob Storage

**SUPPORTED BIG DATA HADOOP DISTRIBUTIONS AND NOSQL\***

Amazon Redshift, Amazon EMR (including Apache Spark), Apache Hadoop (HBase, HDFS, Hive), Apache Spark, Apache Cassandra®, Couchbase, CouchDB, Cloudera Enterprise, Google BigQuery, Greenplum/Pivotal HD, Hortonworks Data Platform, IBM PureData System for Hadoop, MapR, Microsoft HDInsight, MongoDB, Neo4J, Pivotal HD, Riak, SAP HANA, Teradata, THD, Vertica

**BIG DATA FILE FORMAT SUPPORT\***

SEQ, JSON, RC, ORC, and AVRO



**Global Headquarters**  
3307 Hillview Avenue  
Palo Alto, CA 94304  
+1 650-846-1000 TEL  
+1 800-420-8450  
+1 650-846-1005 FAX  
[www.tibco.com](http://www.tibco.com)

**TIBCO Software** empowers executives, developers, and business users with Fast Data solutions that make the right data available in real time for faster answers, better decisions, and smarter action. Over the past 15 years, thousands of businesses across the globe have relied on TIBCO technology to integrate their applications and ecosystems, analyze their data, and create real-time solutions. Learn how TIBCO turns data—big or small—into differentiation at [www.tibco.com](http://www.tibco.com).

©2016, TIBCO Software Inc. All rights reserved. TIBCO, the TIBCO logo, and Jaspersoft are trademarks or registered trademarks of TIBCO Software Inc. or its subsidiaries in the United States and/or other countries. Apache, Apache Cassandra, Hadoop, HBase, Hive, and Spark are trademarks of The Apache Software Foundation in the United States and/or other countries. All other product and company names and marks in this document are the property of their respective owners and mentioned for identification purposes only.

05/31/16